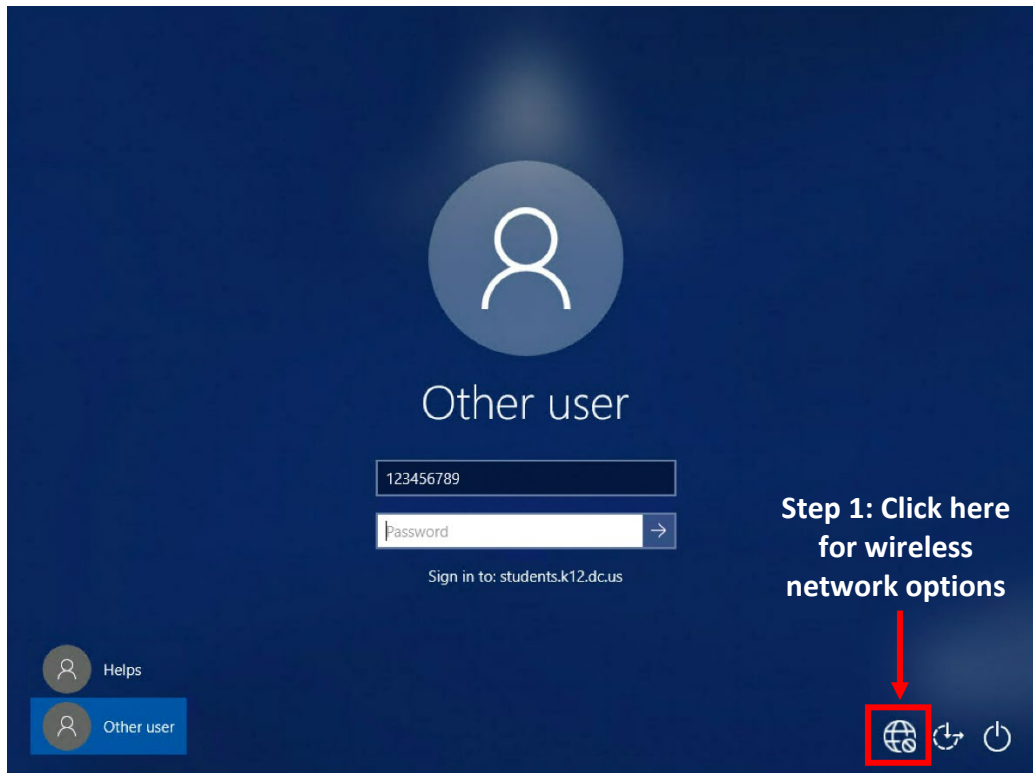


How to Connect to the Internet on Your Student Device

Step 1- Click on the wireless network icon  at the bottom right of the login screen.



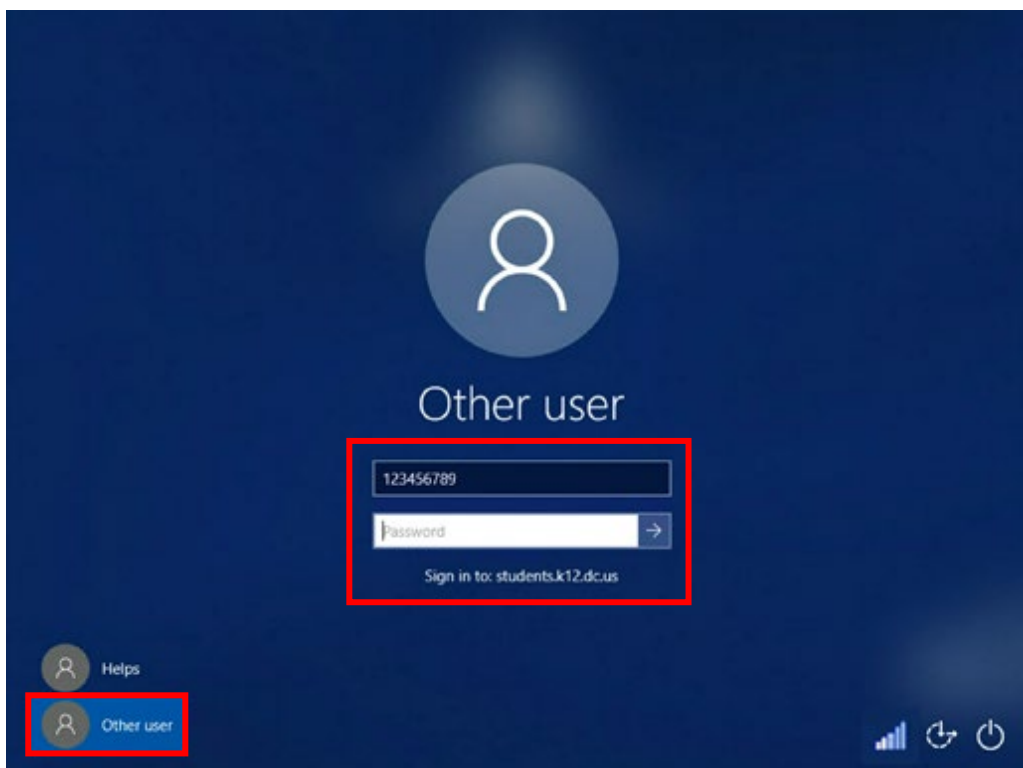
Step 2- Select T-mobile LTE.



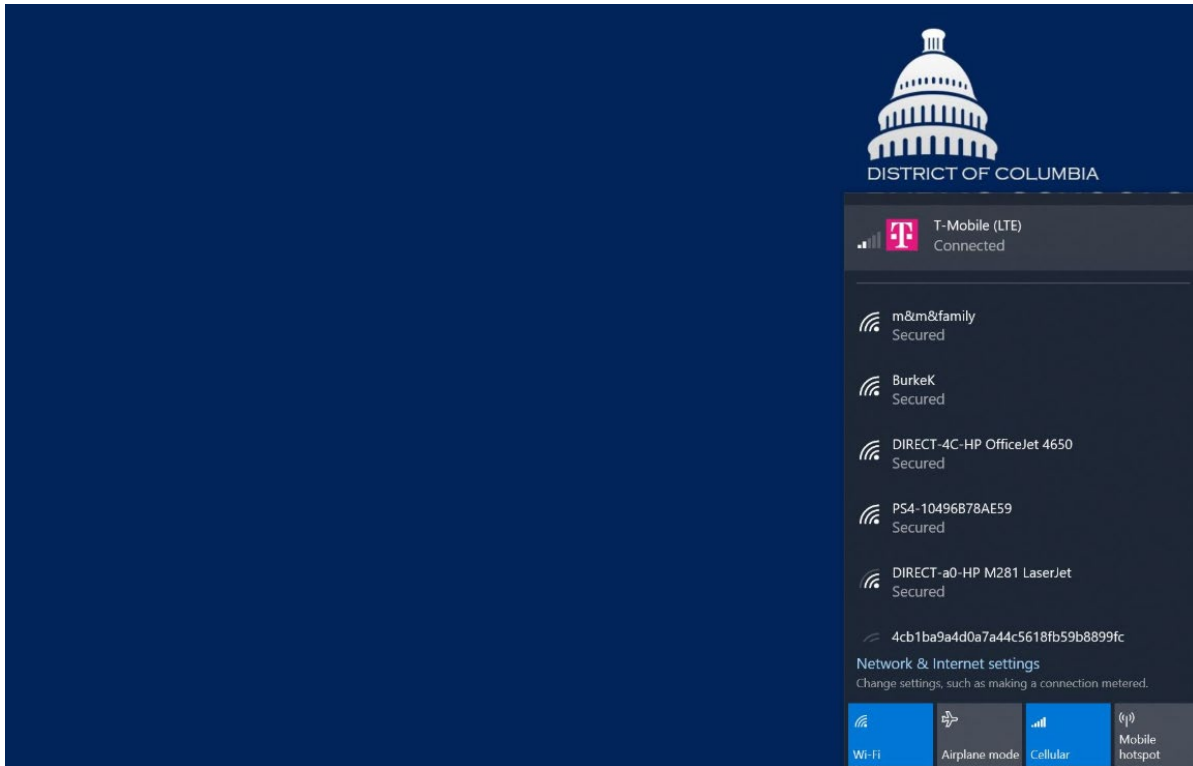
Step 3- Check the box for **Let Windows keep me connected**.



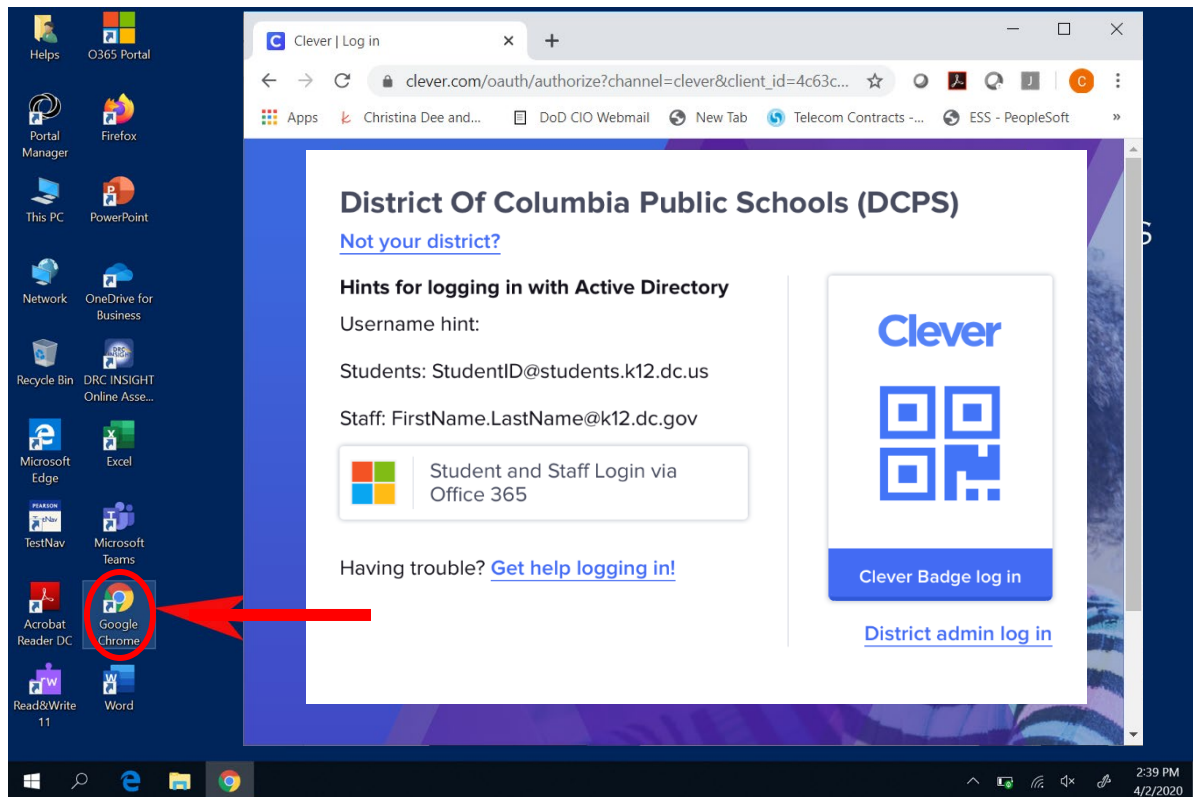
Step 4- You are now connected to the cellular network. Login to the device by selecting **Other User** at the bottom left of the screen and entering the **Student ID** and **password**.



Step 5- After you login, the T-mobile cellular connection should display as **Connected**.





Step 6- Double Click on Google Chrome. This will open up the CLEVER home page for DCPS.



Step 7- Log into CLEVER. For students your username is your [Student ID#]@students.k12.dc.us. After login, select the “Don’t show this again” option.

For assistance with your CLEVER log-in information, call the DCPS main line, 202- 442-5885, and select option 1 for the Family Call Center.

 <p>← 20000120@students.k12.dc.us</p> <h3>Enter password</h3> <p>Password</p> <p>Forgot my password</p> <p>Sign in</p> <p>If you experience login issues, please contact: DCPS Students: (202) 442-5885 and select option 1 DCPS Staff: (202) 442-5715</p>	 <p>20000120@students.k12.dc.us</p> <h3>Stay signed in?</h3> <p>Do this to reduce the number of times you are asked to sign in.</p> <p><input checked="" type="checkbox"/> Don't show this again</p> <p>No Yes</p> <p>If you experience login issues, please contact: DCPS Students: (202) 442-5885 and select option 1 DCPS Staff: (202) 442-5715</p>
---	--